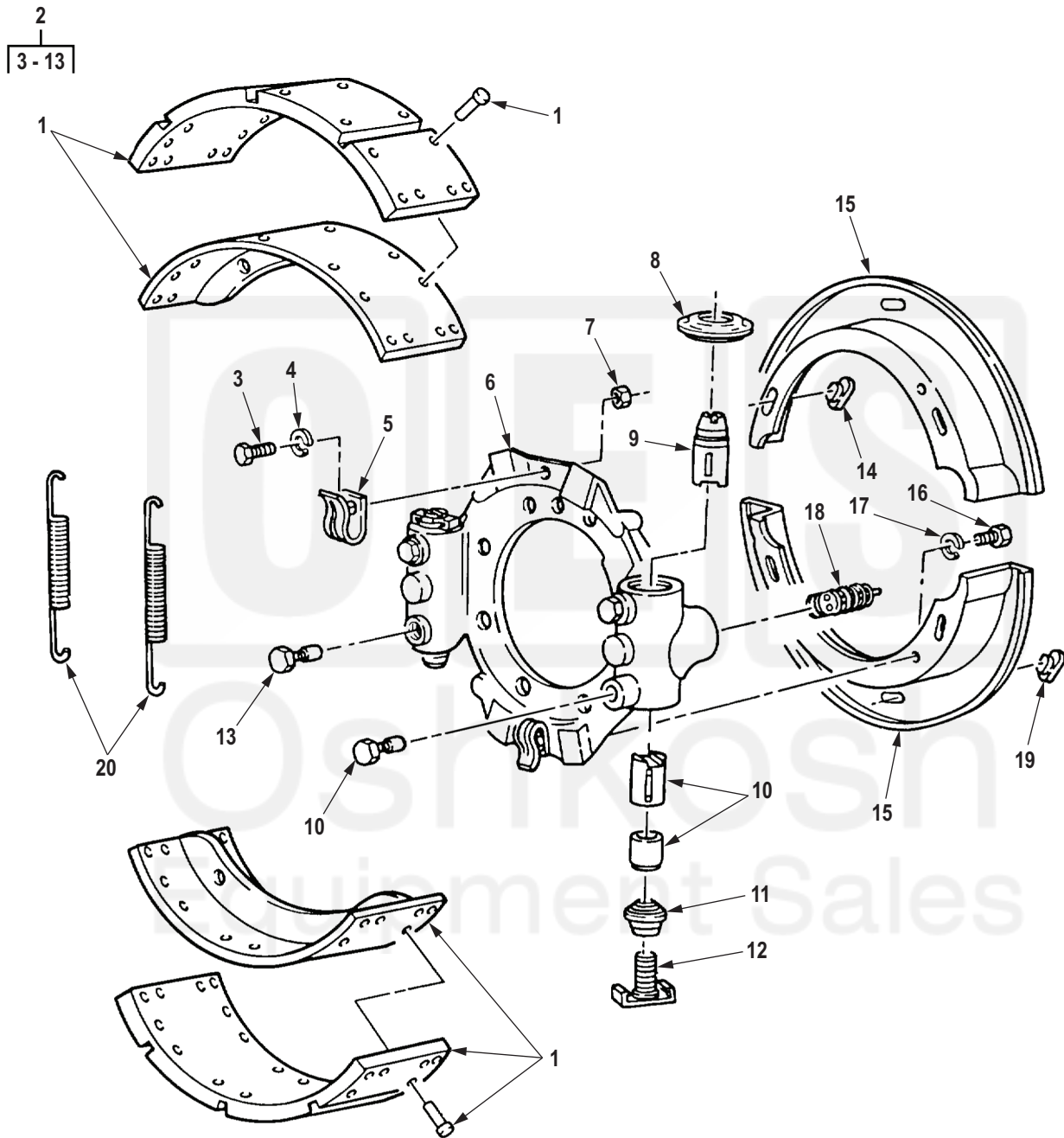


R0260DAA

Figure 245. Front Axle Brake and Spider Assembly.

(1) ITEM NO.	(2) SMR CODE	(3) NSN	(4) CAGEC	(5) PART NUMBER	(6) DESCRIPTION AND USABLE ON CODE (UOC)	(7) QTY
6	PAFZZ	5340-01-292-5552	78500	2257-M-1001	. CLIP,SPRING TENSION UOC: DAC,DAD,DAE,DAF,DAG,DA H,DAJ,DAL,DAW,DAX,V14,V15,V16, V18,V19,V20,V21,V22,V24,ZAA,ZAB, ZAC,ZAD,ZAE,ZAF,ZAG,ZAH,ZAJ,ZAL 2	2
7	PAFZZ	5310-01-063-2299	78500	WA142	. WASHER,LOCK UOC: DAC,DAD,DAE,DAF,DAG,DA H,DAJ,DAL,DAW,DAX,V14,V15,V16, V18,V19,V20,V21,V22,V24,ZAA,ZAB, ZAC,ZAD,ZAE,ZAF,ZAG,ZAH,ZAJ,ZAL 2	2
8	PAFZZ	5306-01-062-3148	78500	S-146-C	. BOLT,MACHINE UOC: DAC,DAD,DAE,DAF,DAG,DA H,DAJ,DAL,DAW,DAX,V14,V15,V16, V18,V19,V20,V21,V22,V24,ZAA,ZAB, ZAC,ZAD,ZAE,ZAF,ZAG,ZAH,ZAJ,ZAL 2	2
9	KFFZZ	2530-01-351-4061	78500	A1779M195	. GUIDE,PLUNGER PART OF KIT P/N KIT1105B, PART OF KIT P/N 3202P8362, PART OF KIT P/N KIT 1174RH UOC: DAC,DAD,DAE,DAF,DAG,DA H,DAJ,DAL,DAW,DAX,V14,V15,V16, V17,V18,V19,V20,V21,V22,V24,ZAA, ZAB,ZAC,ZAD,ZAE,ZAF,ZAG,ZAH,Z AJ,ZAL 2	2
10	PAFZZ	3040-01-280-4156	3D6E9	A-3280-V-8186	. PAWL PART OF KIT P/N KIT1105B, PART OF KIT P/N KIT1164 UOC: DAC,DAD,DAE,DAF,DAG,DA H,DAJ,DAL,DAW,DAX,V14,V15,V16, V17,V18,V19,V20,V21,V22,V24,ZAA, ZAB,ZAC,ZAD,ZAE,ZAF,ZAG,ZAH,Z AJ,ZAL 2	2
11	XAFZZ		78500	3211-L-2872	. SPIDER R.H. UOC: DAC,DAD,DAE,DAF,DAG,DA H,DAJ,DAL,DAW,DAX,V14,V15,V16, V18,V19,V20,V21,V22,V24,ZAA,ZAB, ZAC,ZAD,ZAE,ZAF,ZAG,ZAH,ZAJ,ZAL 1	1
11	XAFZZ		78500	3211-H-2868	. SPIDER L.H. UOC: DAC,DAD,DAE,DAF,DAG,DA H,DAJ,DAL,DAW,DAX,V14,V15,V16, V18,V19,V20,V21,V22,V24,ZAA,ZAB, ZAC,ZAD,ZAE,ZAF,ZAG,ZAH,ZAJ,ZAL 1	1
12	KFFZZ	2530-01-271-7084	3D6E9	A-2297-V-5326	. ADJUSTING SCREW ASS PART OF KIT P/N KIT1105B, PART OF KIT P/N KIT1164 UOC: DAC,DAD,DAE,DAF,DAG,DA H,DAJ,DAL,DAW,DAX,V14,V15,V16, V17,V18,V19,V20,V21,V22,V24,ZAA, ZAB,ZAC,ZAD,ZAE,ZAF,ZAG,ZAH,Z AJ,ZAL 2	2



R0261DAA

Figure 246. Rear Axle Brake and Spider Assembly.

(1) ITEM NO.	(2) SMR CODE	(3) NSN	(4) CAGEC	(5) PART NUMBER	(6) DESCRIPTION AND USABLE ON CODE (UOC)	(7) QTY
11	PAFZZ	5330-01-271-9347	3D6E9	1205-C-2005	. SEAL,PLAIN ENCASED PART OF KIT P/N KIT1105B, PART OF KIT P/N KIT1164 UOC: DAC,DAD,DAE,DAF,DAG,DA H,DAJ,DAL,DAW,DAX,V14,V15,V16, V17,V18,V19,V20,V21,V22,V24,ZAA, ZAB,ZAC,ZAD,ZAE,ZAF,ZAG,ZAH,Z AJ,ZAL	2
12	KFFZZ	2530-01-271-7084	3D6E9	A-2297-V-5326	. ADJUSTING SCREW ASS PART OF KIT P/N KIT1105B, PART OF KIT P/N KIT1164 UOC: DAC,DAD,DAE,DAF,DAG,DA H,DAJ,DAL,DAW,DAX,V14,V15,V16, V17,V18,V19,V20,V21,V22,V24,ZAA, ZAB,ZAC,ZAD,ZAE,ZAF,ZAG,ZAH,Z AJ,ZAL	2
13	KFFZZ	2530-01-351-4061	78500	A1779M195	. GUIDE,PLUNGER PART OF KIT P/N KIT1105B, PART OF KIT P/N 3202P8362, PART OF KIT P/N KIT 1174RH UOC: DAC,DAD,DAE,DAF,DAG,DA H,DAJ,DAL,DAW,DAX,V14,V15,V16, V17,V18,V19,V20,V21,V22,V24,ZAA, ZAB,ZAC,ZAD,ZAE,ZAF,ZAG,ZAH,Z AJ,ZAL	2
14	PAFZZ	5340-00-181-1546	78500	1707C3	CAP-PLUG,PROTECTIVE UOC: DAC,DAD,DAE,DAF,DAG,DA H,DAJ,DAL,DAW,DAX,V14,V15,V16, V18,V19,V20,V21,V22,V24,ZAA,ZAB, ZAC,ZAD,ZAE,ZAF,ZAG,ZAH,ZAJ,ZAL	8
15	PAFZZ	2530-01-271-7075	78500	3264-A-1067	SHIELD,BRAKE DISK UOC: DAC,DAD,DAE,DAF,DAG,DA H,DAJ,DAL,DAW,DAX,V14,V15,V16, V18,V19,V20,V21,V22,V24	8
16	PAFZZ	5305-01-357-1656	3D6E9	S255Z	SCREW,CAP,HEXAGON H UOC: DAC,DAD,DAE,DAF,DAG,DA H,DAJ,DAL,DAW,DAX,V14,V15,V16, V17,V18,V19,V20,V21,V22,V24,ZAA, ZAB,ZAC,ZAD,ZAE,ZAF,ZAG,ZAH,Z AJ,ZAL	12
17	PAFZZ		78500	1229-S-513-C	WASHER,LOCK UOC: DAC,DAD,DAE,DAF,DAG,DA H,DAJ,DAL,DAW,DAX,V14,V15,V16, V18,V19,V20,V21,V22,V24,ZAA,ZAB, ZAC,ZAD,ZAE,ZAF,ZAG,ZAH,ZAJ,ZAL ...	12